



WEST COAST OCEAN
DATA PORTAL

Marine Planner
Visualization Tool Tour

Marine Planner Visualization Tool Basics

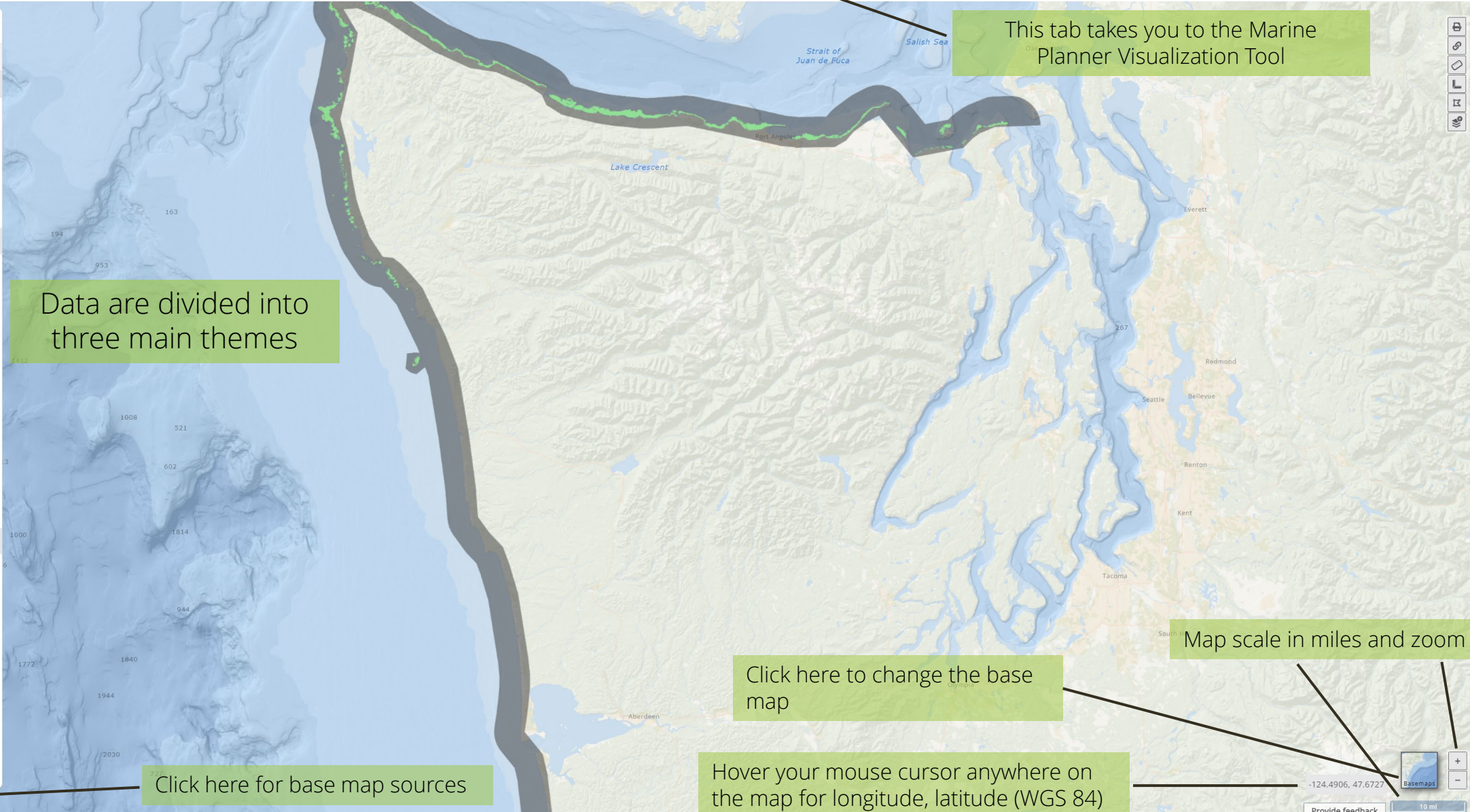


- DISCOVER
- CONNECT
- INFORM
- VISUALIZE**
- ABOUT
- LAURA

Search data

Active • 2 MyPlanner Data Legend

- Biological**
 - FISH
 - HABITAT
 - INVERTEBRATES
 - MARINE MAMMALS AND TURTLES
 - MARINE PLANTS AND ALGAE
- Human**
 - BOUNDARIES
 - CONSERVATION
 - ENERGY
 - FISHING
 - HAZARDS
 - HERITAGE
 - INFRASTRUCTURE
 - MANAGEMENT
 - MARITIME INDUSTRY
 - MILITARY
 - POPULATION
 - RECREATION (NON-CONSUMPTIVE)
 - RESEARCH
- Physical**
 - ATMOSPHERE
 - BATHYMETRY
 - CIRCULATION
 - ESTUARIES
 - LAND SURFACE
 - MARINE SUBSTRATES
 - OCEANS
 - WEST COAST WIND SPEED



This tab takes you to the Marine Planner Visualization Tool

Data are divided into three main themes

Click here to change the base map

Map scale in miles and zoom

Hover your mouse cursor anywhere on the map for longitude, latitude (WGS 84)

Click here for base map sources

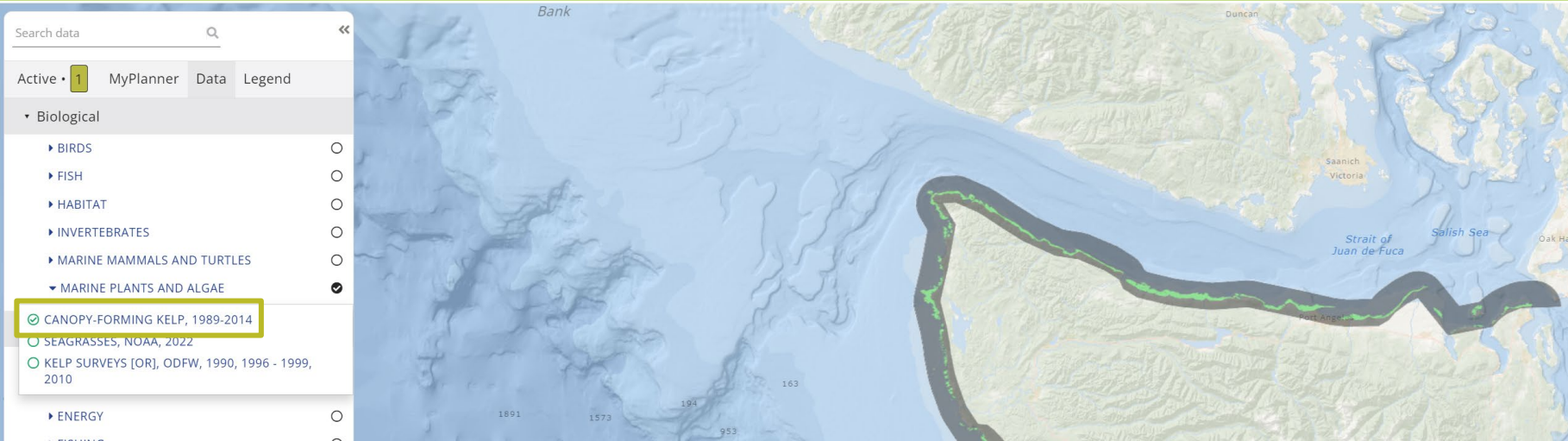
Basemaps

10 mi

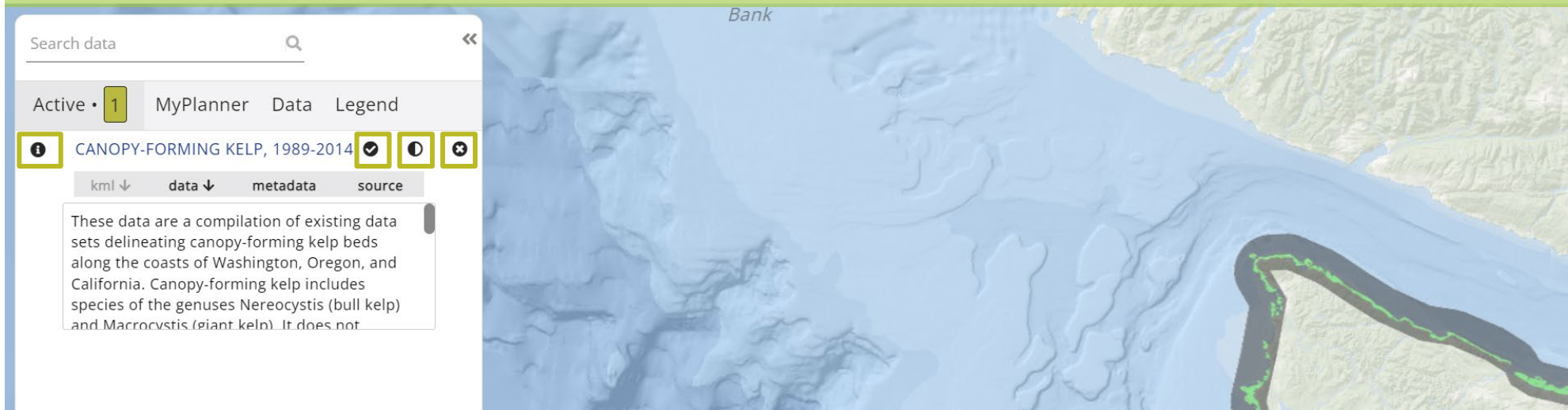
Provide feedback

Marine Planner Visualization Tool Basics

To visualize a layer later you click the open circle, and the layer will appear on the map.



To learn more about the layer, turn the layer on/off, adjust the opacity, or remove the layer, explore the four circular buttons within the "Active" tab.



Using Marine Planner's Special Tools

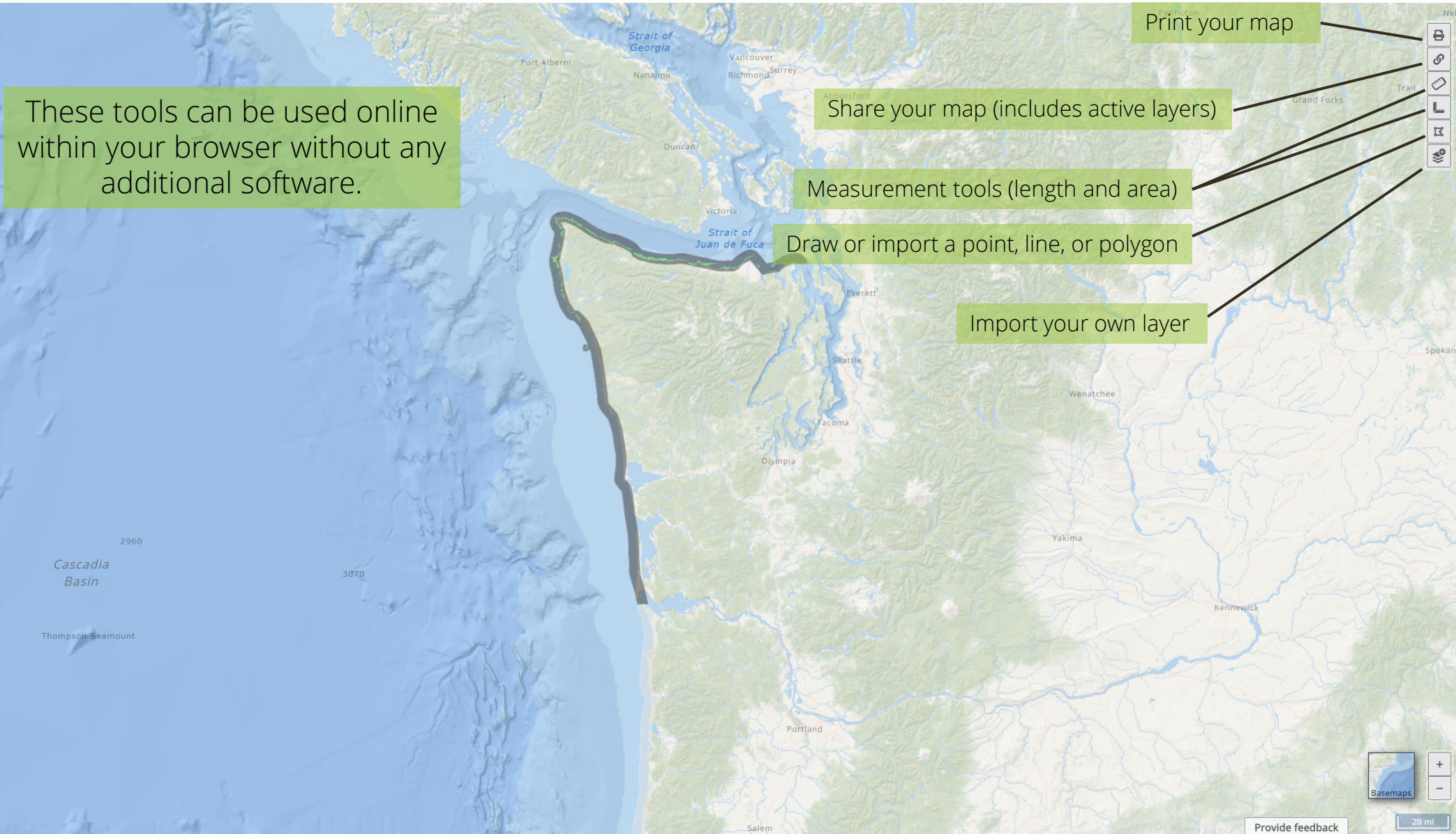


Search data

Active 2 MyPlanner Data Legend

- KELP SURVEYS [OR], ODFW, 1990, 1996 - 1999, 2010
- CANOPY-FORMING KELP, 1989-2014

Clear All Layers



These tools can be used online within your browser without any additional software.

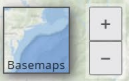
Print your map

Share your map (includes active layers)

Measurement tools (length and area)

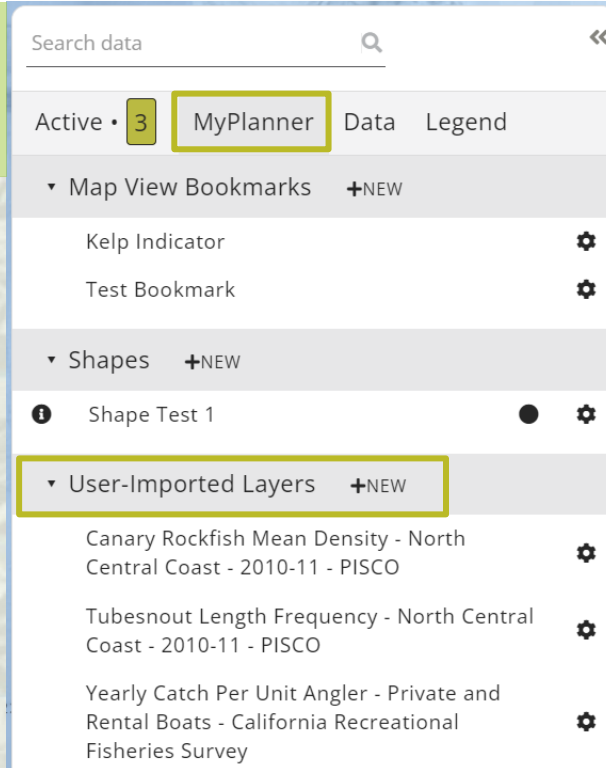
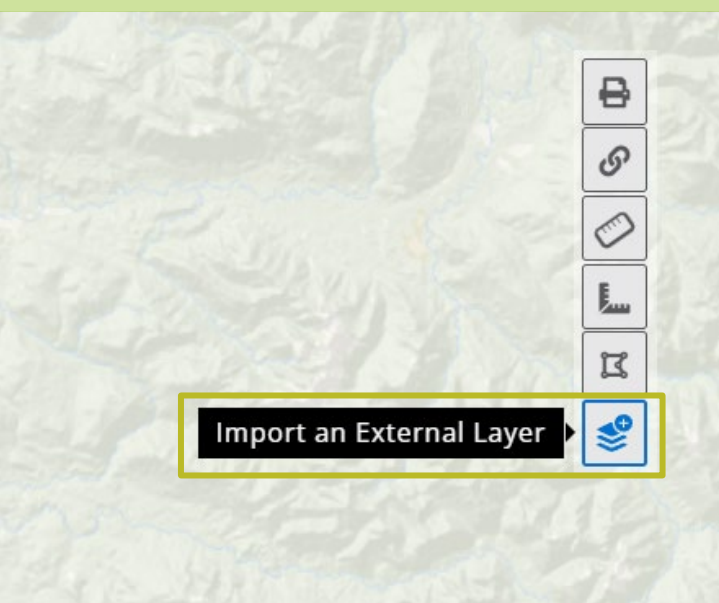
Draw or import a point, line, or polygon

Import your own layer

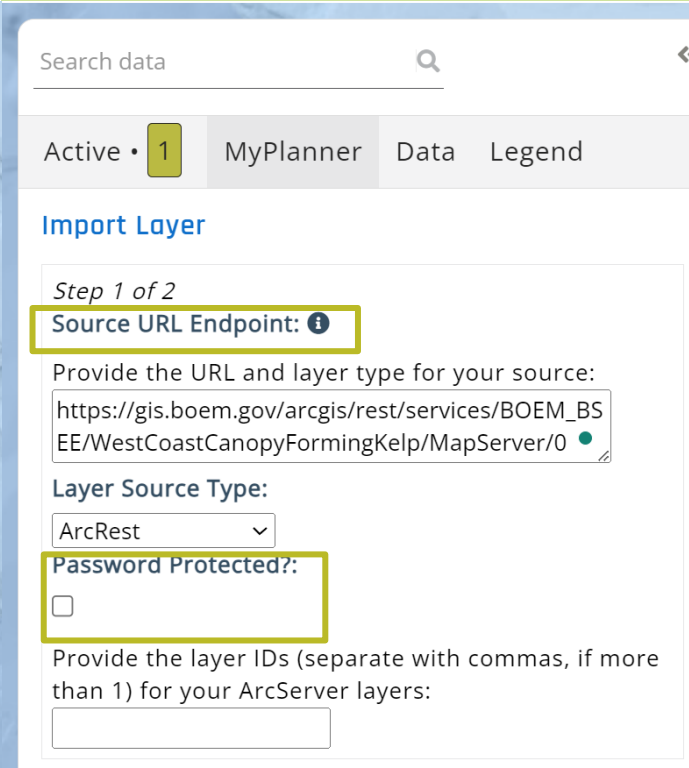


User-imported Layers

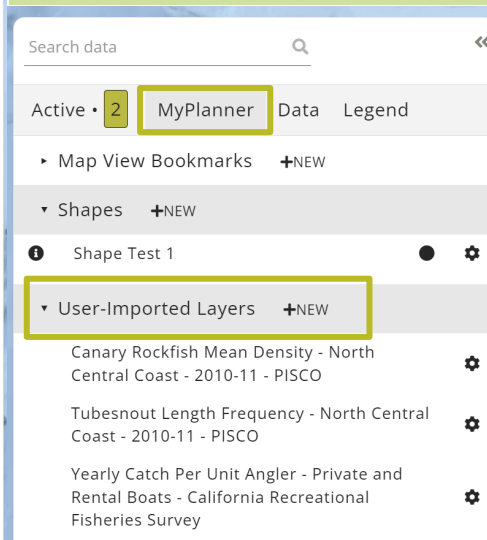
Step 1: There are two options for importing your own layer. You can use the icon on the far upper right or the "+New" button in the "User-Imported Layer" tab within "MyPlanner."



Step two: Your layer must be online to import into the Marine Planner tool. This is the BOEM kelp layer for example.



Step three: Your layer will stay in your "User-importer Layers" tab in your account and can be edited and share from there.



Importing your own layer will not make it available for everyone, it will only be available on your account or if you share it. These layer URLs can also be password protected.

Reminder: You must be logged in to use this feature.